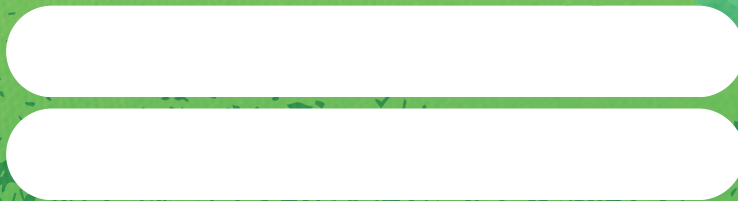


a to z

lowercase tracing

Preschool Worksheets



a



ant

Tracing practice lines for the letter 'a'. Each row consists of a solid top line, a dashed middle line, and a solid bottom line. Five dashed lowercase 'a's are provided in each row for tracing. There are seven such rows in total, with the last row being empty for independent practice.

b



bat

Tracing practice for the letter 'b'. The page contains seven rows of handwriting lines. Each row consists of a solid top line, a dashed middle line, and a solid bottom line. Within each row, there are seven dashed lowercase 'b' characters for tracing.

C



cat

c c c c c

c c c c c

c c c c c

c c c c c

c c c c c

c c c c c

d

dog



d d d d d d d d

d d d d d d d d

d d d d d d d d

d d d d d d d d

d d d d d d d d

d d d d d d d d

d d d d d d d d

d d d d d d d d

d d d d d d d d

e

elephant



e e e e e e e e

e e e e e e e e

e e e e e e e e

e e e e e e e e

e e e e e e e e

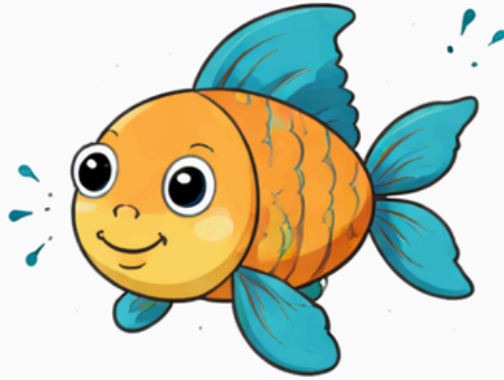
e e e e e e e e

e e e e e e e e

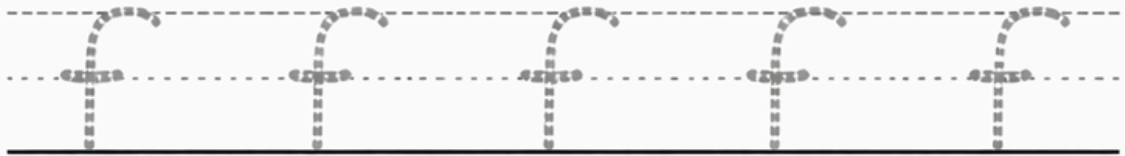
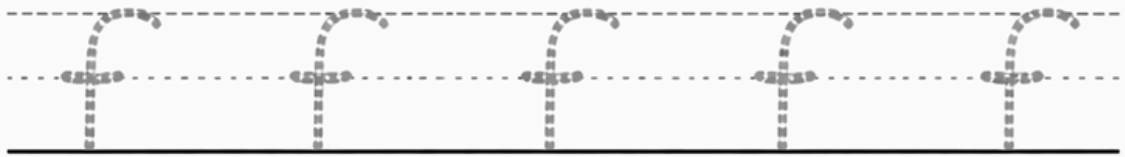
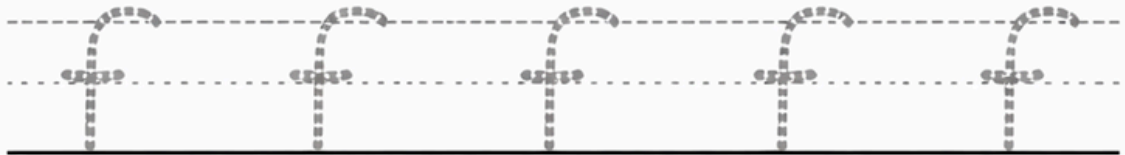
e e e e e e e e

e e e e e e e e

f



fish



g



goat

g g g g g g g

g g g g g g g

g g g g g g g

g g g g g g g

g g g g g g g

g g g g g g g

h

hen



h h h h h h h

h h h h h h h

h h h h h h h

h h h h h h h

h h h h h h h

h h h h h h h

h h h h h h h

h h h h h h h

h h h h h h h

i



igloo

Handwriting practice lines for the letter 'i'. Each row consists of a solid top line, a dashed middle line, and a solid bottom line. The first row contains ten dotted lowercase 'i's for tracing. The second row contains ten dotted lowercase 'i's for tracing. The third row contains seven dotted lowercase 'i's for tracing, followed by three dotted lowercase 'l's for tracing. The fourth row contains ten dotted lowercase 'i's for tracing. The fifth row contains five dotted lowercase 'i's for tracing, followed by five dotted lowercase 'l's for tracing. The sixth row contains ten dotted lowercase 'i's for tracing. The seventh row contains ten dotted lowercase 'i's for tracing. The eighth row contains ten dotted lowercase 'i's for tracing.

j



jug

j j j j j j j

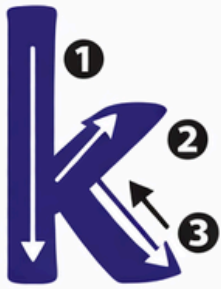
j j j j j j j

j j j j j j j

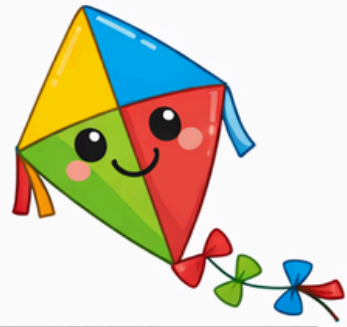
j j j j j j j

j j j j j j j

j j j j j j j

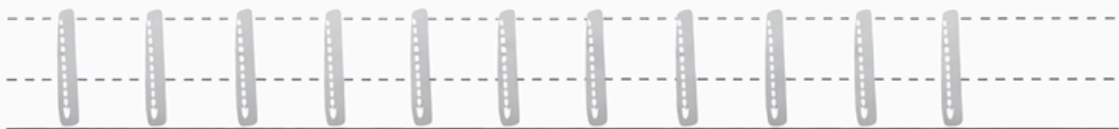
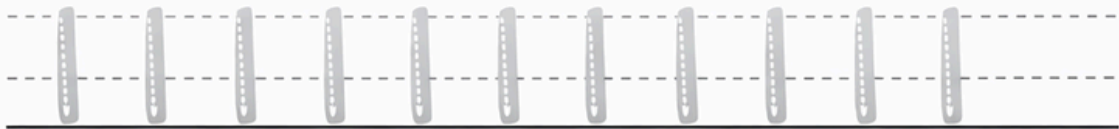
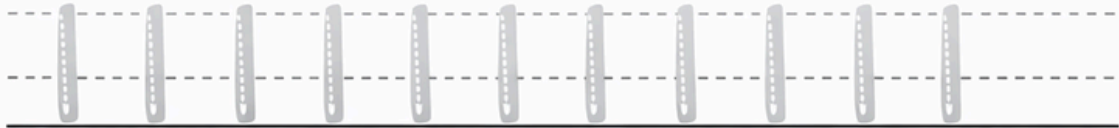
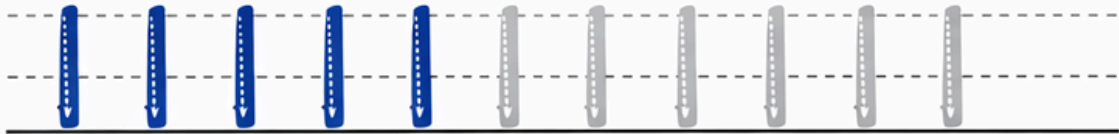


kite





lion





monkey



1
n
2.



nest

n n n n n n n

n n n n n n n

n n n n n n n

n n n n n n n

n n n n n n n

n n n n n n n

Blank handwriting lines for independent practice.

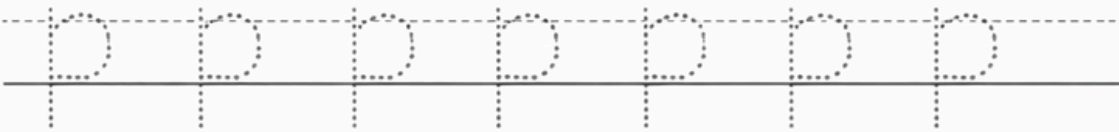
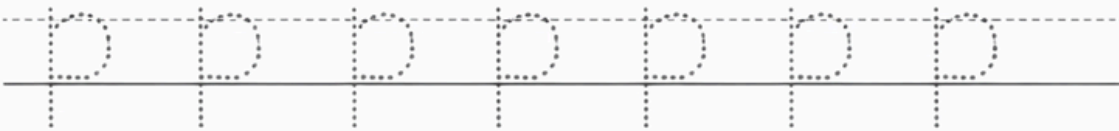
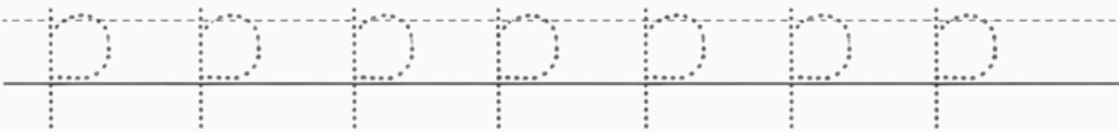
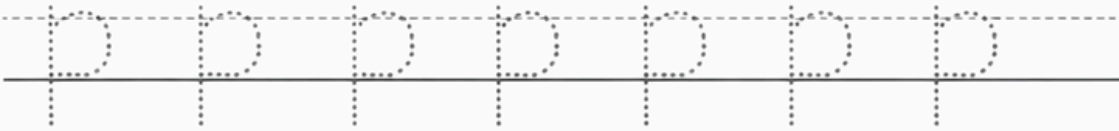
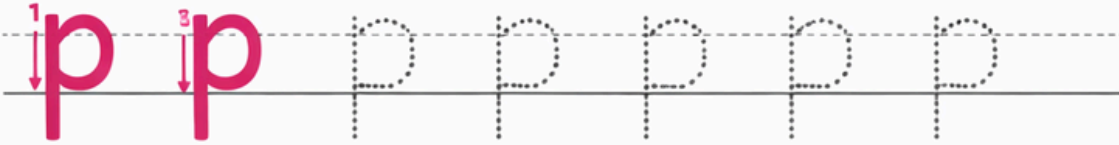


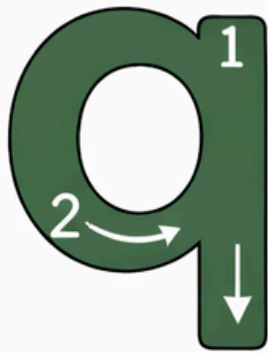
orange

Handwriting practice lines for the letter 'O'. Each line consists of a solid top line, a dashed middle line, and a solid bottom line. The first line contains a solid orange 'O' with a directional arrow and the number 1, followed by seven dotted 'O's for tracing. The following five lines each contain eight dotted 'O's for tracing.



parrot





queen

Tracing practice for the letter 'q'. The first row contains seven 'q's: the first is solid green with stroke order arrows, and the following six are dashed for tracing. Below this are five more rows, each containing seven dashed 'q's for tracing. Each letter is positioned on a set of three horizontal lines (top, middle, and bottom) to guide the student's writing.

1
2



rabbit

r r r r r r r

r r r r r r r

r r r r r r r

r r r r r r r

r r r r r r r

r r r r r r r



sun

Handwriting practice section consisting of seven rows of three-lined guides. Each row contains seven 'S' characters for tracing. The first row features three solid green 'S' characters followed by four dashed 'S' characters. The remaining six rows consist entirely of dashed 'S' characters.



tree

Handwriting practice lines for the letter 't'. Each row contains seven 't's. The first row has three solid green 't's followed by four dashed 't's. The following five rows each contain seven dashed 't's for tracing. The lines are composed of a solid top line, a dashed middle line, and a solid bottom line.

1 3



umbrella

u u u u u u u

u u u u u u u

u u u u u u u

u u u u u u u

u u u u u u u

u u u u u u u



van

Tracing practice area consisting of seven rows of handwriting lines. Each row contains seven dashed purple 'V' characters for tracing. The first row also includes two solid purple 'V' characters at the beginning for reference. The handwriting lines consist of a solid top line, a dashed middle line, and a solid bottom line.



watermelon



Handwriting practice lines for the letter 'W'. The first row contains two dotted 'W's made of blue beads, followed by seven dotted 'W's. The following seven rows each contain seven dotted 'W's for tracing. The final two rows are blank handwriting lines for independent practice.

xylophone

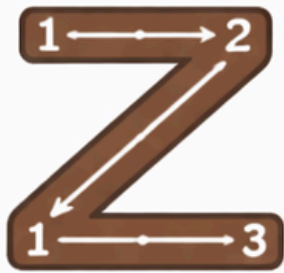


Handwriting practice lines for the letter 'X'. The first row contains two solid red 'X's followed by five dashed 'X's for tracing. The following seven rows each contain seven dashed 'X's for tracing.



yak

Handwriting practice section consisting of five rows of horizontal lines. Each row contains seven lowercase 'y' characters. The first two characters in each row are solid yellow, and the remaining five are dashed grey for tracing. The first row also includes a solid orange 'y' at the beginning.



zebra

Handwriting practice section consisting of seven rows of horizontal lines. Each row contains seven 'Z' characters. The first row features two solid brown 'Z's followed by five dashed 'Z's for tracing. The subsequent six rows each contain seven dashed 'Z's for tracing. Below the seventh row, there are two additional empty rows of horizontal lines for independent practice.

